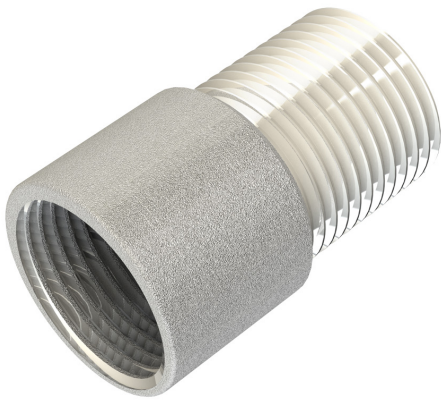


PRODUCT CODE: FA1G
CONDUIT ADAPTOR



DESCRIPTION

20mm(Male) - 3/4"(Female) Conduit Adaptor

FINISH

BZP

MATERIAL

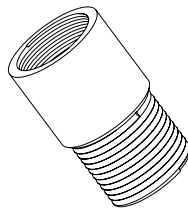
Steel

PACKAGING

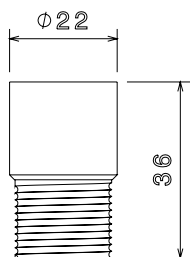
Packed in qty 100

ADDITIONAL NOTES

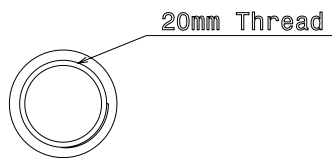
Conforms to BS EN61386-1
Compliant to LU Standard 1-085 (for use on surface & sub-surface locations)



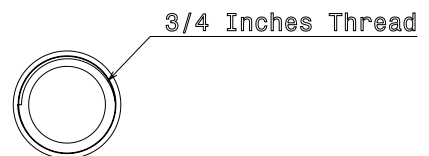
Isometric view



side view



Top view



Bottom view